

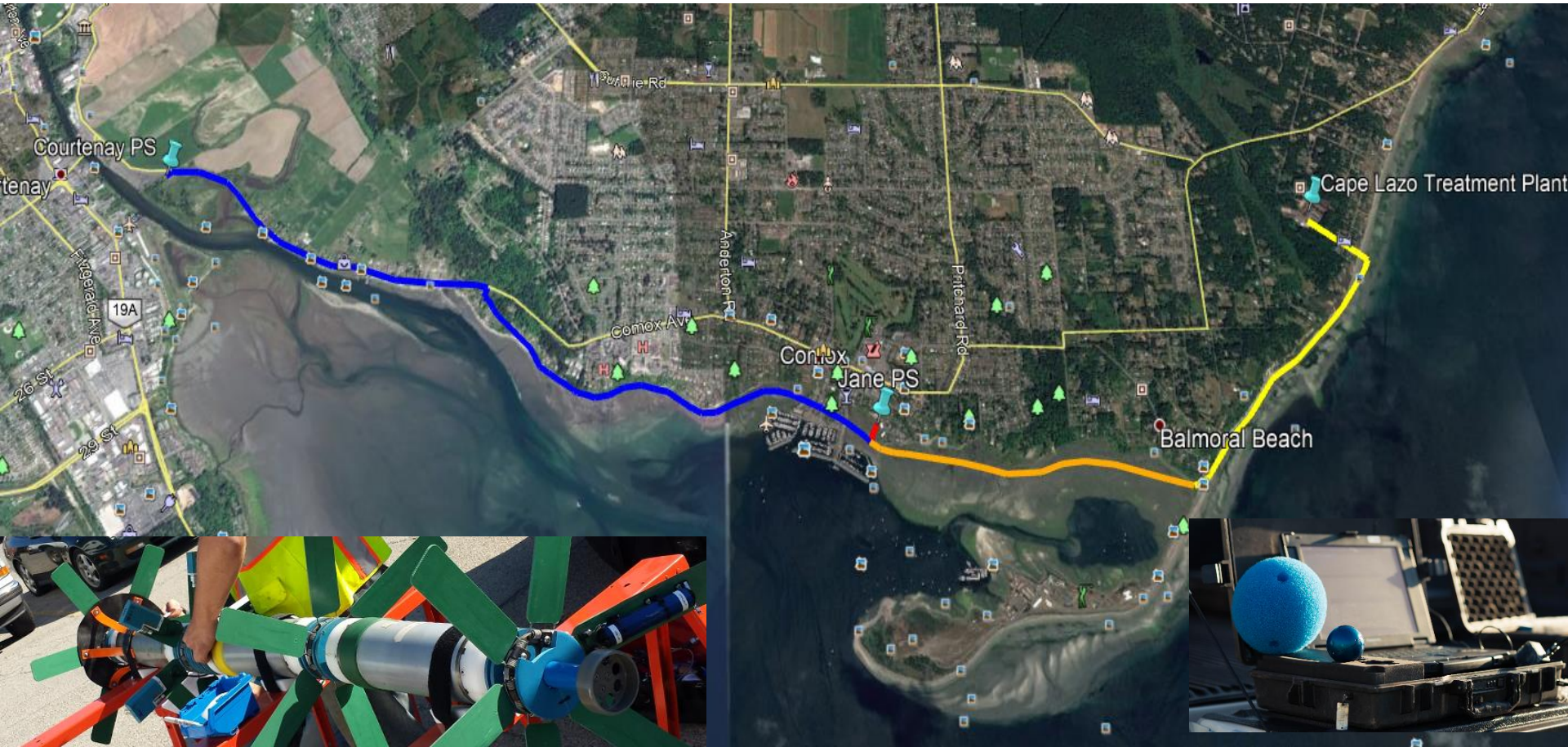
# Comox 2 Pump Station

Pre-implementation  
investigation results

# Background/summary

- 2016 risk assessment = high risk
- Identified potential red flags early on
- Risk of failure driving project
- Investigations to resolve flags in parallel with preliminary design process
- Results are in and a better solution may exist

# Forcemain Condition



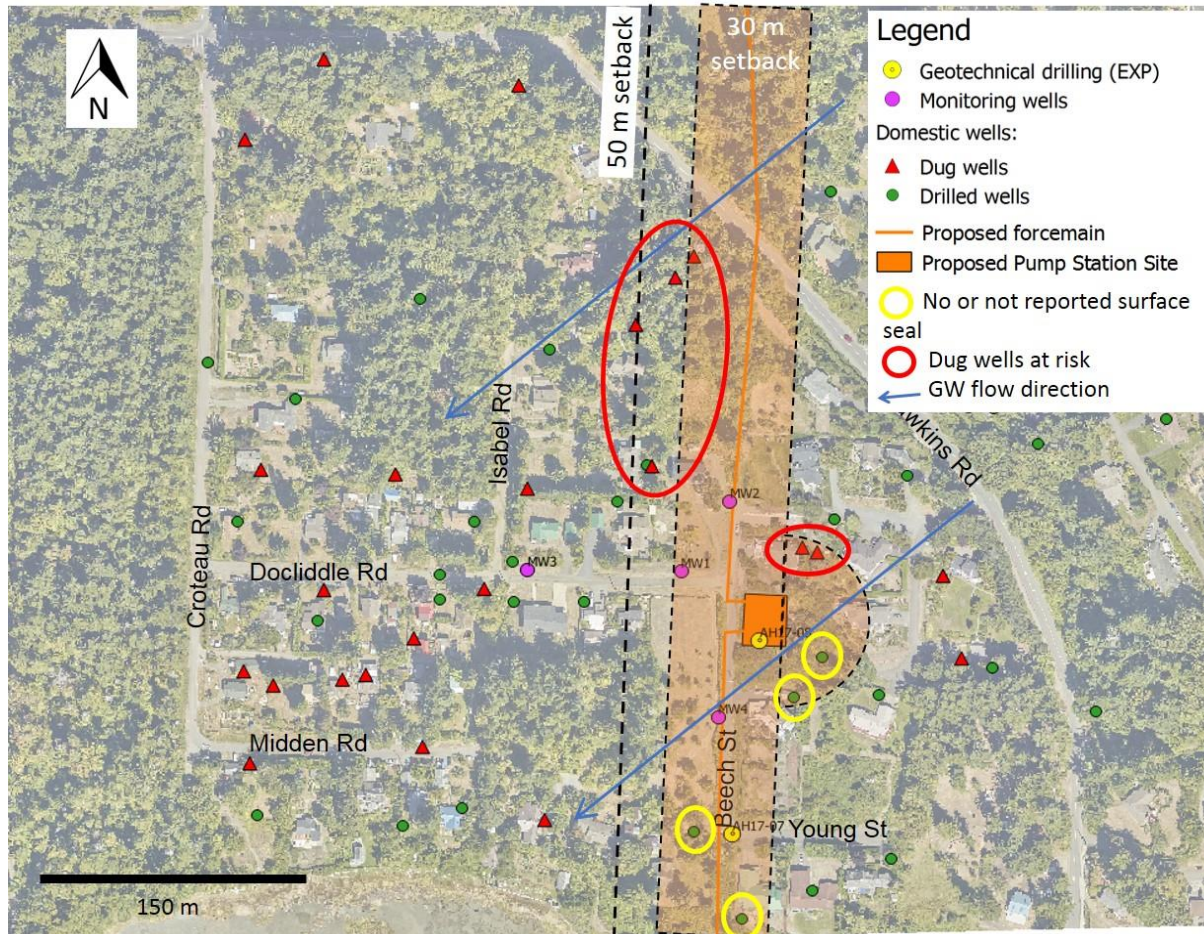
# Forcemain Condition cont.

- No leaks or broken reinforcing wires/bars
- Estuary portion should last expected life
- Willemar Bluffs (WB) section better than expected
- Updated risk assess. = decreased risk

# Capital Costs

- Higher than anticipated
  - Construction cost escalation
  - Foreshore tie-in complexity
  - Small size of property
  - High level of redundancy
  - Odor, noise, vibration mitigation

# Risk to groundwater



# Alignment Review

- Undertaken in case a red flag unresolved
- Financial/risk of Comox 2 vs alternatives
- Concluded that
  - Higher operational costs likely outweigh higher initial capital of alternative
  - Introduction of a single point of failure increases risks

# Conclusions

- Comox 2 capital/lifecycle costs higher than expected
- Likely a less expensive/lower risk solution
- Condition and risk assessments = time
- Capacity at the Courtenay PS remains a concern
- Replacing Willemar Bluffs section still a priority
- Comox 2 on table until viable alternative confirmed



# Next Steps

- Staff to develop options for discussion at January sewage commission meeting
- Extensive analysis and engagement required that will take approximately 12 months
- Seek grant funding to minimize financial impact on residents

# Questions?